

SCIENCE

GALLERY

KING'S
College
LONDON

SCIENCE GALLERY LONDON

MEETINGS, EVENTS & HOSPITALITY

SCIENCE

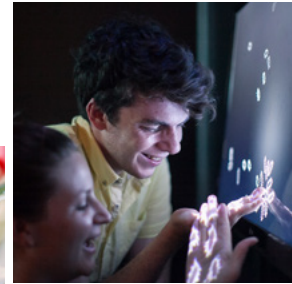
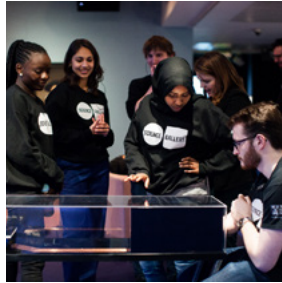
GALLERY

KING'S
College
LONDON

SCIENCE GALLERY

WHERE
ART AND SCIENCE
COLLIDE





Innovating at the boundaries of art and science, Science Gallery London is a vibrant venue offering modern meeting and event space in the heart of London Bridge.



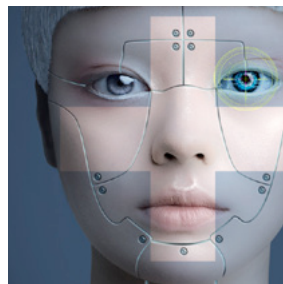
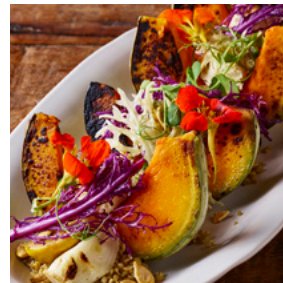
SCIENCE

GALLERY

A SPACE TO MEET

Science Gallery London offers a place to meet, connect, participate and be inspired. Spanning three floors, the venue offers a variety of spaces for meetings and events from breakfast to dinners and everything in between, seven days a week ranging from 20 to 320 guests.

The theatre is a dedicated space with an adjoining reception area and is an ideal option for key speaker events and presentations. Seating is retractable offering flexibility for workshops, drinks receptions and private dining.





A SPACE TO WINE AND DINE

As the most exciting venue in the London Bridge area, the site offers a variety of thought-provoking spaces ideally suited for fine dining and cocktail receptions. With opportunities to interact with the latest exhibitions, experience an immersive evening in the beautiful gallery space.

Working with our in-house chef brigade, we will deliver cutting edge catering as dynamic as the exhibitions surrounding them.

For truly unique events, enjoy summer in the city with Guy's Courtyard providing a memorable outdoor event space for up to 320 guests. Located adjacent to the Shard, it is the perfect setting for exclusive hospitality.







A SPACE TO CELEBRATE

Your special day deserves a unique venue.

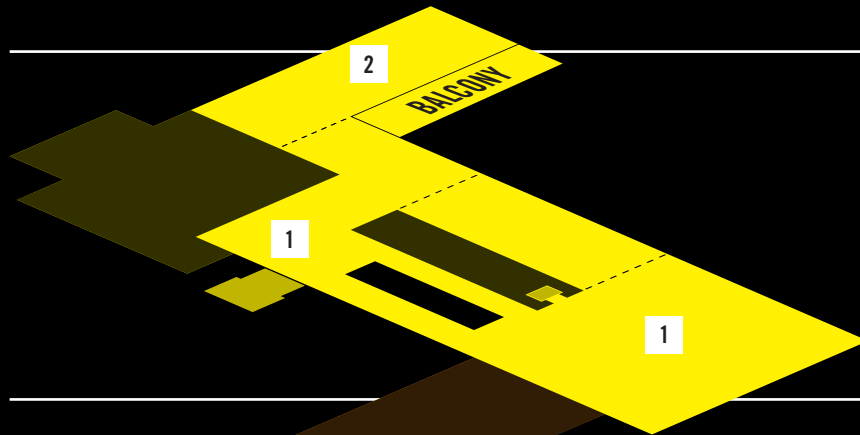
Science Gallery London provides a bespoke service for weddings and celebrations with a dedicated event planner and contemporary spaces.

The Studio provides receptions for up to 100 guests with a private balcony overlooking the courtyard and the Shard. Alternatively, why not host your wedding breakfast in the gallery or enjoy the weather in Guy's Courtyard for a truly unforgettable celebration.



SPACES

Spanning three floors, Science Gallery London offers a variety of space for private hire.



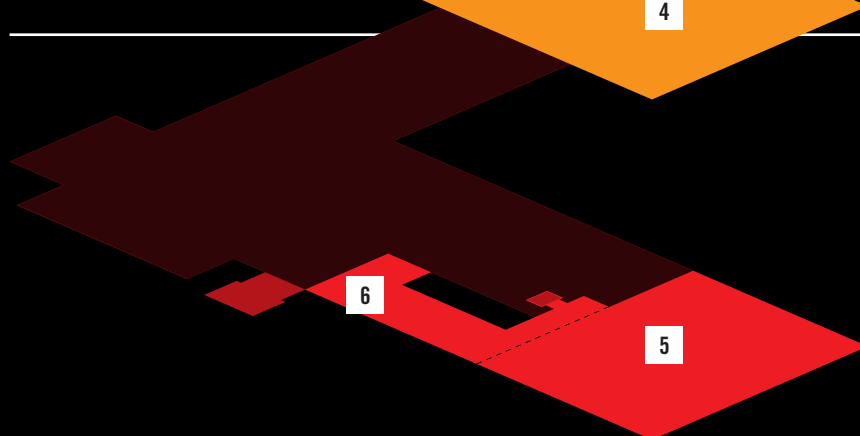
FIRST FLOOR

1. Gallery 1 and Gallery 2
2. Studio and balcony



GROUND FLOOR

3. The Courtyard
4. Ground floor space



LOWER GROUND FLOOR

5. Theatre
6. The Atrium

CAPACITIES

FLOOR	ROOM	THEATRE STYLE	BOARDROOM	CABARET	DRINKS	DINING
FIRST FLOOR	The Gallery 1 and Gallery 2	–	–	–	200	–
	Studio and balcony	100	46	54	100	72
	The Gallery with Studio and balcony	–	–	–	250	–
GROUND FLOOR	The Courtyard	–	–	–	320	–
	Ground floor space	–	–	–	220	120
LOWER GROUND FLOOR	Theatre	124	20	42	–	54
	The Atrium	–	–	–	100	–

